



22 Albury Place, St. Michaels Street, Shrewsbury, SY1 2ET

Shrewsbury & Country House
Sales

**MILLER
EVANS**

22 Albury Place, St. Michaels Street,
Shrewsbury, SY1 2ET

£239,950

Leasehold

- Modern, stylish, and deceptively spacious, first floor apartment
- Bedroom one with en suite shower room
- Second bedroom and contemporary bathroom
- Open plan living room and kitchen
- Private parking space
- Convenient location close to amenities
- *No Upward Chain*



An immaculately presented, spacious, stylish two bedroom first floor leasehold apartment with open-plan living/dining room and kitchen, bedroom one with en suite shower room, second bedroom and bathroom. One private car parking space within a secure residents car park.

The property was originally built by project of the year 2002 winners SY HOMES and has been finished to exceptionally high standard with lavish fittings throughout. Service charges are £889.20 half yearly.

The property occupies a pleasant position on this popular residential development, well placed within easy reach of all the town centre amenities including Shrewsbury railway station, many fashionable bars and restaurants, Theatre Severn, Quarry Park and Dingle Gardens.



HALLWAY
Useful store cupboard

OPEN PLAN KITCHEN / LIVING ROOM
13'6" x 22'10"
Kitchen fitted with a range of contemporary wall and base units with integrated appliances.

BEDROOM 1
11'9" x 11'0"

EN SUITE SHOWER ROOM
Fitted with a contemporary suite with large shower cubicle
Wash hand basin, wc

BEDROOM 2
10'6" x 6'7"

BATHROOM
Contemporary suite with free standing bath
Shower cubicle
Wash hand basin, wc

OUTSIDE THE PROPERTY
Private parking space.

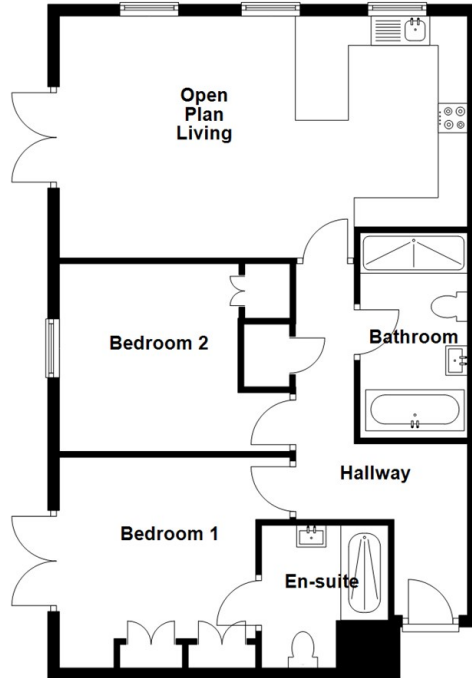
NOTE: This property may be subject to additional management service charges.



HOW TO GET THERE

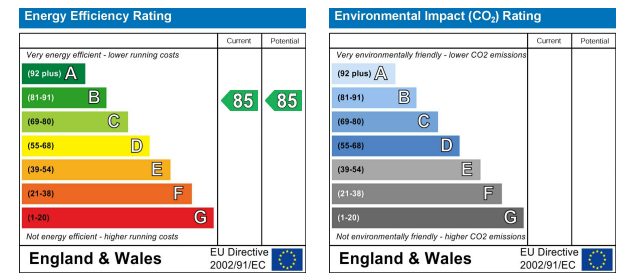
The property is best approached out of Shrewsbury along Castle Foregate and St Michaels Street, where the development will be found on the left hand side.

First Floor



Total area: approx. 818.8 sq. feet

Illustration For Identification Purposes Only. Not To Scale.
Plan produced using PlanUp.



IMPORTANT NOTICE

Our particulars have been prepared with care and are checked where possible by the vendor. They are however, intended as a guide. Measurements, areas and distances are approximate. Appliances, plumbing, heating and electrical fittings are noted, but not tested. Legal matters including Rights of Way, Covenants, Easements, Wayleaves and Planning matters have not been verified and should take advice from your legal representatives and Surveyor.

Miller Evans is fully committed to implementing the GDPR 2018 and the Money Laundering Regulations 2017 and will at all times ensure that your personal data is held in strict accordance with the law.

DO YOU HAVE A PROPERTY TO SELL ?

We will always be pleased to give you a no obligation market assessment of your existing property to help with your decision to move.

SERVICES

We understand that mains water, electricity, drainage and natural gas are connected to the property.

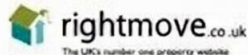
Council Tax Band : A

LOCAL AUTHORITIES

Shropshire Council
Shirehall, Abbey Foregate, Shrewsbury, SY1 6ND

**MILLER
EVANS**

FIND OUR PROPERTIES ON:



Residential Sales & Lettings
Eagle House, 4 Barker Street,
Shrewsbury SY1 1QJ
Tel: 01743 236800

South Shropshire Sales Office
4 The Square,
Church Stretton SY6 6DA
Tel: 01694 724700



www.millerevans.co.uk | homes@millerevans.co.uk

Members of: National Association of Estate Agents • Guild of Property Professionals • National Federation of Property Professionals

Partners: David S. Miller (FNAEA) Proprietor • Stuart Langley (FNAEA)

Associates: William Miller • Sharon L. Langley (MARLA) Consultant: David C. Evans